

# OUR IMPACT IN LONDON COMMUNITIES 2020

## REBUILDING COMMUNITIES

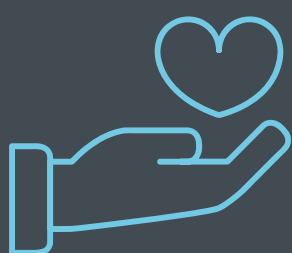
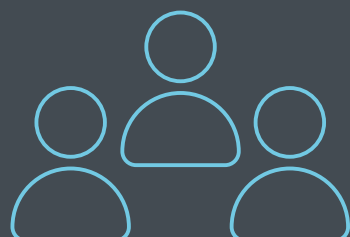
Our COVID-19 Helpline supported over **2,500** people in a crisis to build resilience



**£27,669**

Was awarded in community grants to local organisations

Through our Community Connectors programme **265** people were supported to achieve better mental health and wellbeing



We helped **2,240** people through our Food Bank service to access good food and support

## INSPIRING CHANGE IN YOUNG PEOPLE

Through our More than Mentors project we supported over

**300**

young people to build emotional resilience and self-confidence



We supported

**300**

BAME women through our Create Your Future project to secure employment opportunities

## RAISING AWARENESS

Our health team engaged with

**22,859**

patients encouraging cancer screening

## IMPACTFUL ADVICE

Our Advice services helped **3,299** people to overcome the problems they face and prevent them from occurring again

